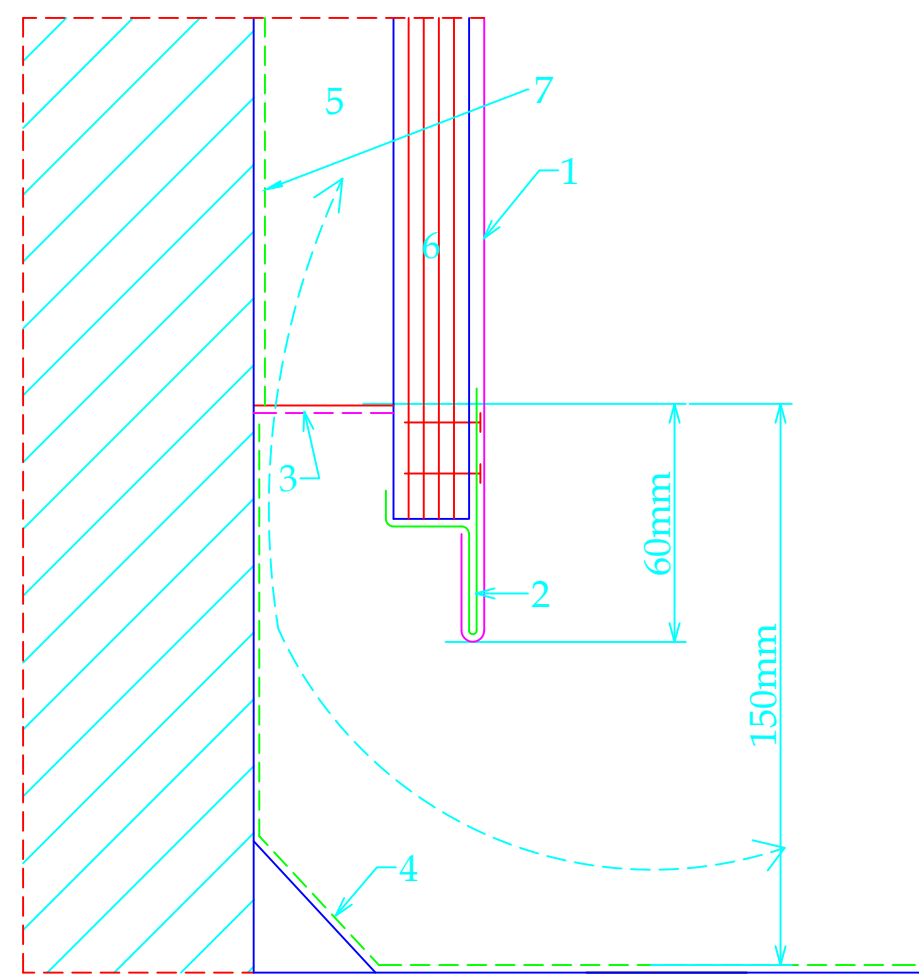


# BASE OF THE FLAT LOCK PANEL



- 1. flat lock panel in VMZINC® PLUS, th=0.8 m
- 2. continuous edge flashing in VMZINC® PLUS, th=0.8 mm
- 3. mesh (2 mm max weave)
- 4. roofing membrane
- 5. ventilated space (th = from 20 mm to 38 mm)
- 6. plywood
- 7. VMZINC® Membrane

VMZINC

STANDARD DETAIL

Ref : VMZ-PC-VO-02

Date : 2022

VM Building Solutions UK Collier House, Mead Lane, Hertford, SG13 7AX Tel: 0203.445.5640

VM BUILDING SOLUTIONS